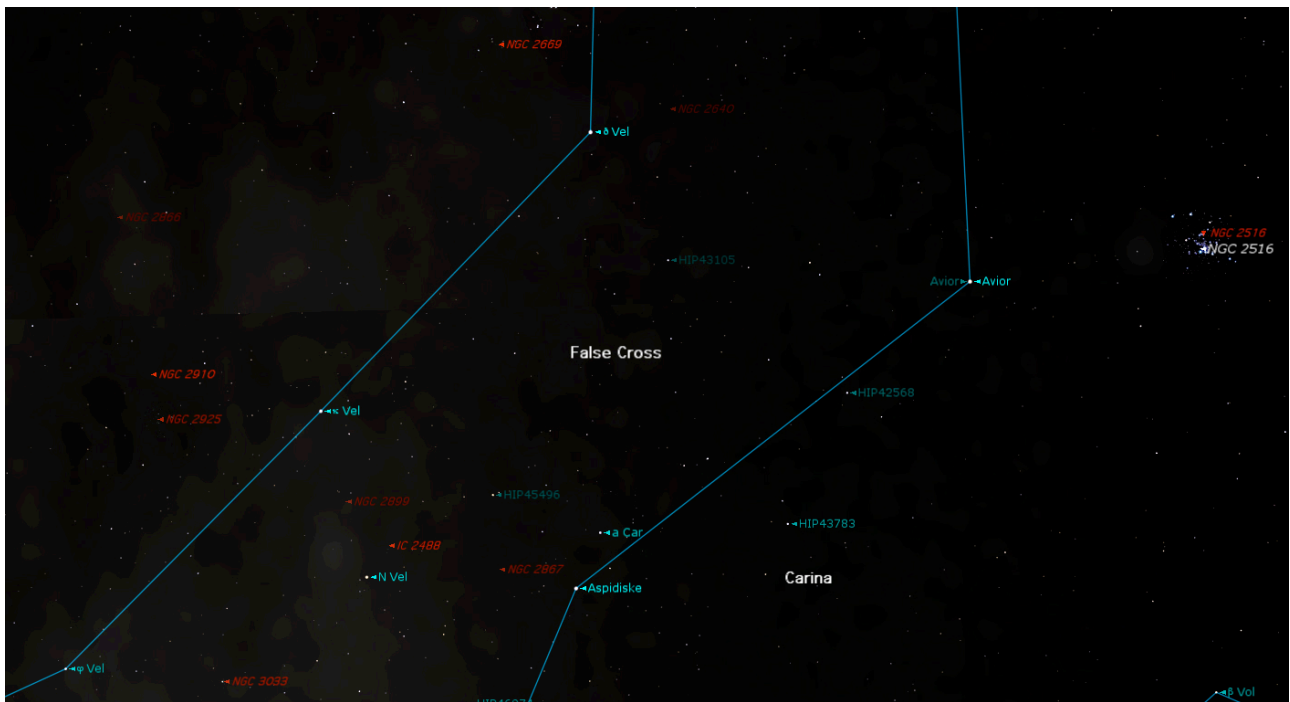


ASTERISM FALSE CROSS

The False Cross lies between the constellations Carina and Vela.

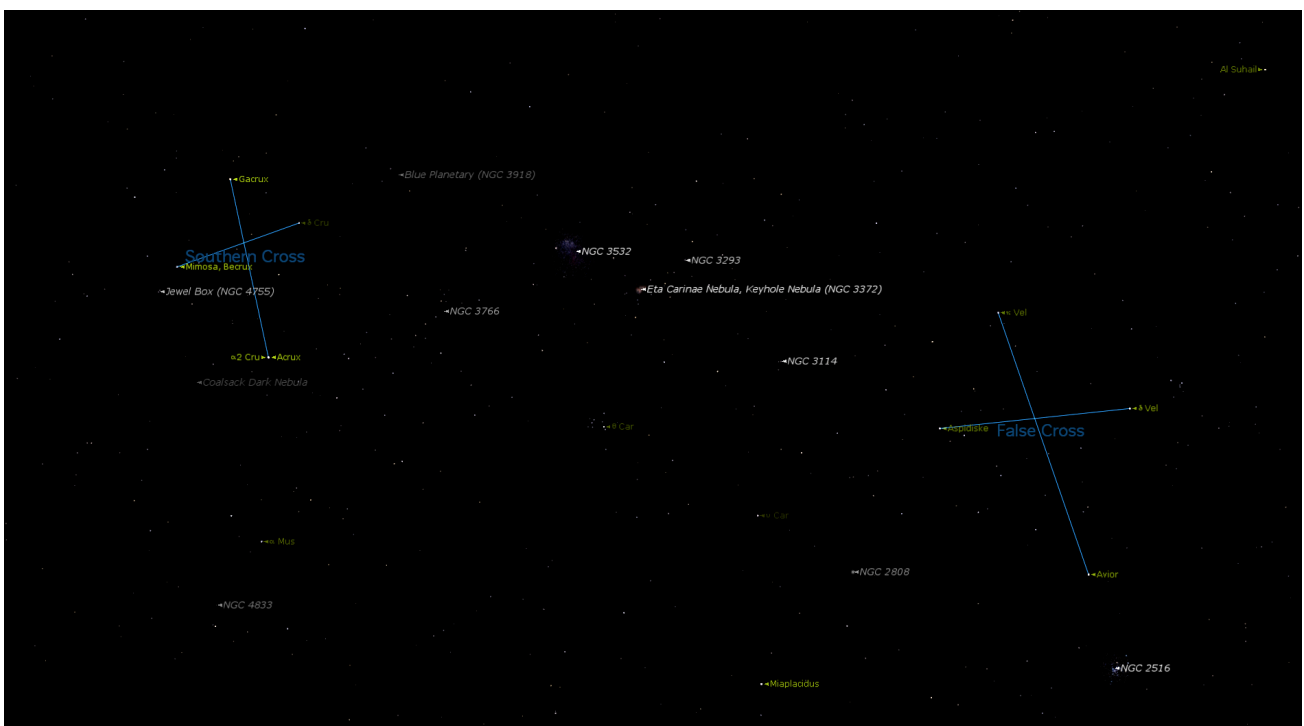
The stars Delta Velorum and Kappa Velorum in Vela, and Iota Carinae and Epsilon Carinae in Carina.

LEFT THE BORDER OF VELA AND RIGHT THE BORDER OF CARINA



When looking for the asterism Southern Cross, it is easy to be mistaken with a similar asterism nearby; the False Cross, causing errors in Astronavigation.

LEFT THE SOUTHERN CROSS AND RIGHT THE FALSE CROSS



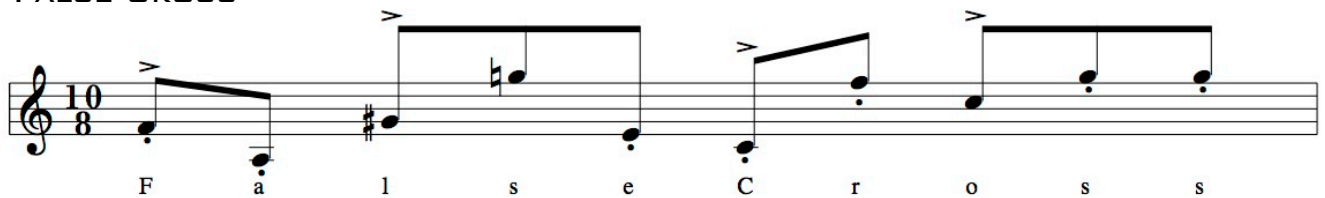
Asterism - An asterism is a distinctive pattern of stars or a distinctive group of stars in the sky.

Constellation - A grouping of stars that make an imaginary picture in the sky.
There are 88 constellations.

Open Cluster - A loose aggregation of dozens or hundreds of young stars, in a volume of space typically less than 50 light-years across, that is only weakly held together by gravity and is fated to disperse over a period of several hundred million years.

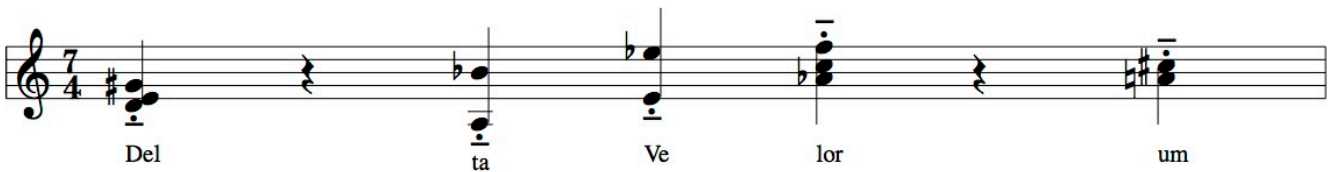
THE MAIN-THEMES IN ASTERISM FALSE CROSS

FALSE CROSS



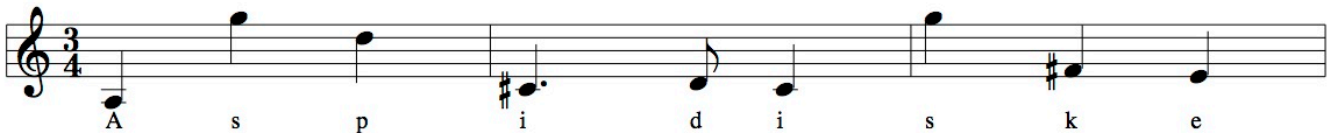
Musical notation for the False Cross asterism. The notation is in treble clef with a 10/8 time signature. It consists of a single melodic line with notes and rests. The notes are: F (quarter), a (quarter), l (quarter), s (quarter), e (quarter), C (quarter), r (quarter), o (quarter), s (quarter), s (quarter). There are accents (>) over the first 'F', the 'l', and the first 's'. There are also horizontal lines above the notes 'l s e' and 'o s s'.

DELTA VELORUM



Musical notation for the Delta Velorum asterism. The notation is in treble clef with a 7/4 time signature. It consists of a single melodic line with notes and rests. The notes are: Del (quarter), ta (quarter), Ve (quarter), lor (quarter), um (quarter). There are accents (>) over the 'l' and 'r'. There are also horizontal lines above the notes 'lor' and 'um'.

ASPIDISKE



Musical notation for the Aspidiske asterism. The notation is in treble clef with a 3/4 time signature. It consists of a single melodic line with notes and rests. The notes are: A (quarter), s (quarter), p (quarter), i (quarter), d (quarter), i (quarter), s (quarter), k (quarter), e (quarter). There are accents (>) over the 'i' and 's'.

KAPPA VELORUM



Musical notation for the Kappa Velorum asterism. The notation is in treble clef with a 8/4 time signature. It consists of a single melodic line with notes and rests. The notes are: K (quarter), a (quarter), p (quarter), p (quarter), a (quarter), V (quarter), e (quarter), l (quarter), o (quarter), r (quarter), u (quarter), m (quarter). There is a triplet bracket over the first three 'p' notes. There are accents (>) over the 'V' and 'u'.

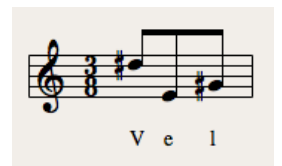
AVIOR



THE MOTIVES IN ASTERISM FALSE CROSS

VEL

A BAYER / FLAMSTEED INDICATION



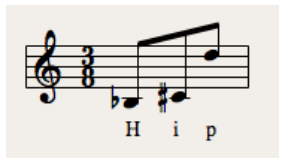
CAR

A BAYER / FLAMSTEED INDICATION



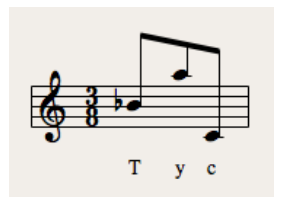
HIP

THE HIPPARCOS AND TYCHO CATALOGUES (VOL. 1-17)



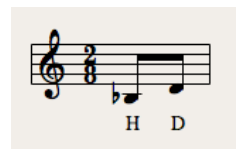
TYC

TYCHO MISSION
THE HIPPARCOS AND TYCHO CATALOGUES (VOL. 1-17)



HD

HENRY DRAPER CATALOGUE



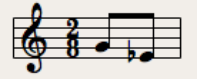
GCRV

GENERAL CATALOG OF STELLAR RADIAL VELOCITIES



GJ

GLIESE + JAHREISS - CATALOGUE OF NEARBY STARS



G J

IRAS

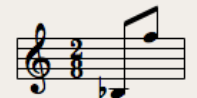
INFRARED ASTRONOMICAL SATELLITE (IRAS), CATALOGS AND ATLASES



I R A S

HR

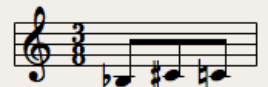
HARVARD OBSERVATORY - THE BRIGHT STAR CATALOGUE



H r

HIC

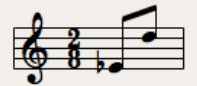
HIPPARCOS INPUT CATALOGUE



H i c

JP

JODRELL BANK, PULSAR - PULSARS: OBSERVATIONAL PARAMETERS AND A DISCUSSION ON DISPERSION MEASURES



J P

PLX

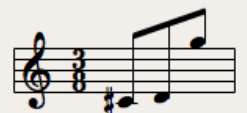
PARALLAX - GENERAL CATALOGUE OF TRIGONOMETRIC STELLAR PARALLAXES, COMPILED AT THE YALE UNIVERSITY OBSERVATORY



P L X

IDS

INDEX CATALOGUE OF VISUAL DOUBLE STARS



I D S

SAO

SMITHSONIAN ASTROPHYSICAL OBSERVATORY



S A O

PPM

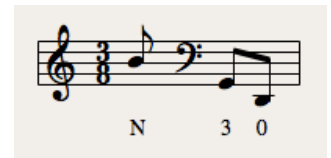
POSITION AND PROPER MOTIONS NORTH STAR CATALOGUE



P P M

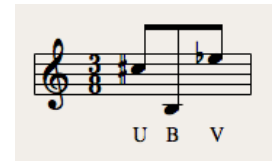
N30

NORMAL SYSTEM, EPOCH 1930 - CATALOG OF 5268 STANDARD STARS FOR THE EQUINOX AND EPOCH 1950.0 BASED ON THE NORMAL STAR SYSTEM N30



UBV

UBV SYSTEM - PHOTOELECTRIC CATALOGUE , MAGNITUDES AND COLORS OF STARS IN THE UBV AND UCVB SYSTEMS



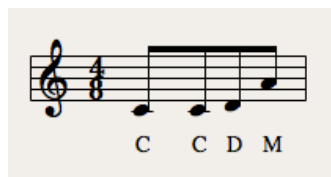
SKY#

SKYMAP



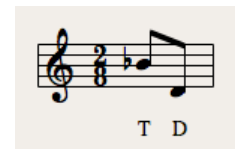
CCDM

CATALOGUE DES COMPOSANTES D'ÉTOILES DOUBLES ET MULTIPLES



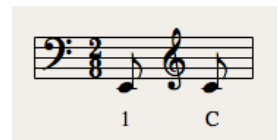
TD

TIDAL DWARE - STAR-FORMING OBJECTS IN THE TIDAL TAILS OF COMPACT GROUPS



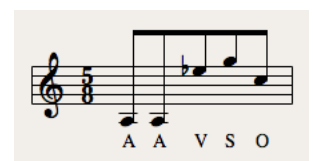
1C

1ST CAMBRIDGE CATALOG - A PRELIMINARY SURVEY OF THE RADIO STARS IN THE NORTHERN HEMISPHERE



AAVSO

AMERICAN ASSOCIATION OF VARIABLE STAR OBSERVERS



CPC

CAPE PHOTOGRAPHIC CATALOGUE

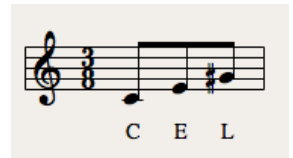


CSI

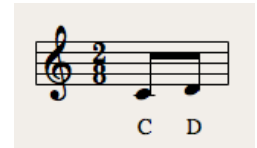
CATALOG OF STELLAR IDENTIFICATIONS



CEL
CELESCOPE CATALOG OF ULTRAVIOLET MAGNITUDES



CD
CORDOBA DURCHMUSTERUNG DECLINATION



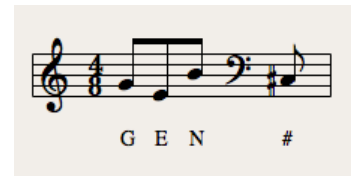
2E
EINSTEIN OBSERVATORY, 2ND VERSION



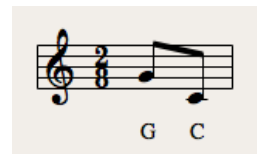
CPD
CAPE PHOTOGRAPHIC DURCHMUSTERUNG FOR THE EQUINOX 1875



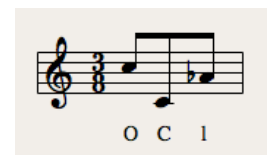
GEN#
GENEVA IDENTIFICATION SYSTEM



GC
GENERAL CATALOGUE OF 33342 STARS FOR THE EPOCH 1950



OCL
CATALOG OF STAR CLUSTERS AND ASSOCIATIONS



ESO
EUROPEAN SOUTHERN OBSERVATORY - THE ESO/UPPSALA SURVEY OF THE ESO (B) ATLAS OF SOUTH SKY



C
CLUSTER

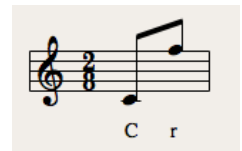


CL VDBH
VAN DEN BERGH + HAGEN - UNIFORM SURVEY OF CLUSTERS IN THE SOUTHERN MILKY WAY



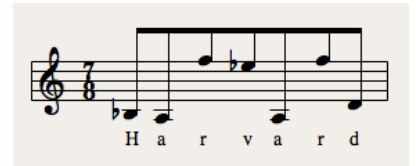
CR

COLLINDER - ON STRUCTURED PROPERTIES OF OPEN GALACTIC CLUSTERS AND THEIR SPATIAL DISTRIBUTION



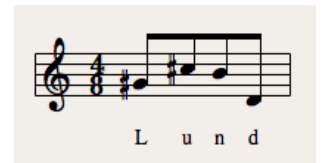
HARVARD

HARVARD UNIVERSITY



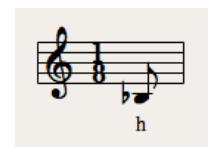
LUND

LUND OBSERVATORY



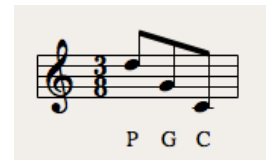
H

NUEVAS NEBULOSAS PLANETARIAS Y OBJETOS CON EMISION EN LA REGION DEL CENTRO GALACTICO



PGC

PRINCIPAL GALAXIES CATALOG



NSV

NEW CATALOG OF SUSPECTED VARIABLE STARS



CSV

CATALOG OF SUSPECTED VARIABLE STARS



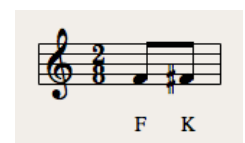
ROT

ROTATIONAL VELOCITY - CATALOGUE OF ROTATIONAL VELOCITIES OF STARS



FK

FEIGELSON + KRISS - DISCOVERY OF THREE X-RAY LUMINOUS PRE-MAIN SEQUENCE STARS



UVBY98

U, V, B, Y, 1998 - PHOTOELECTRIC PHOTOMETRIC CATALOGUE



GSC

GAS-STAR COMPLEX - ESTIMATES OF GEOMETRIC AND DYNAMIC PARAMETERS OF STAR-GAS COMPLEXES IN THE GALAXY



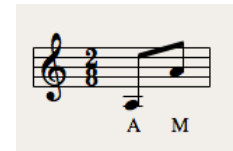
PISMIS

NUEVOS CUMULOS ESTELARES EN REGIONES DEL SUR



AM

ARP+MADORE - A CATALOGUE OF SOUTHERN PECULIAR GALAXIES AND ASSOCIATIONS



FAUST

FAR UV SPACE TELESCOPE



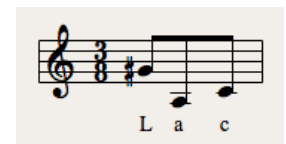
SACS

SECOND ASTROLABE CATALOGUE OF SANTIAGO



LAC

LACERTA - STUDIES IN GALACTIC STRUCTURE



THEMES USED IN FALSE CROSS

FALSE CROSS

THEMES USED IN DELTA VELORUM

DELTA VELORUM
HIP 42913
TYC 8573-3571-1
HD 74956
GCRV 5781
GJ 321.3A
GJ 9278A
GSC 08573-03571
IRAS 08433-5431
HR 3485
ECLIPSING BINARY
OPEN CLUSTER

HIC 42913
JP11 1716
PLX 2098
IDS 08419-5420 A
SAO 236232
PPM 337198
* DEL VEL
N30 2047
UBV 8508
SKY# 16780
CCDM J08448-5442A
1RXS J084443.0-544226
CCDM J08448-5442 AB
TD1 13061
UBV M 14708
1C 32.25
AAVSO 0842-54
CPC 19 3104
CSI-54 1788 44
CEL 2852
CD-54 2351
2E 2046
CPD-54 1788
GEN#+1.00074956J
GC 12069
2E 0843.3-5431

IC 2391

OMICRON VELORUM CLUSTER
OCL 767
ESO 166-SC4
C85
OMICRON VEL CLUSTER
C 0838-528
CL VDBH 42

NGC 2669

OCL 768
ESO 165-SC5
CR 202
HARVARD 3
LUND 481
H 3140
GC 1701

NGC 2640

IRAS 08360-5456
ESO 165-2
PGC 24229
H 3134
GC 1685

THEMES USED IN ASPIDISKE

ASPIDISKE
HIP 45556
IOTA CARINAE
TYC 8595-3312-1
HD 80404
NSV 4444
CEL 3256
CSV 6705
GCRV 6067
HR 3699
N30 2212
ROT 1461
TD1 13795
UBV M 15288
* IOT CAR
CPC 20 2542
FK5 351

GEN#+1.00080404
Hic 45556
IRAS 09157-5903
PLX 2222.1
SAO 236808
UVBY98 100080404
CD-58 2529
CPD-58 1465
GC 12831
GSC 08595-03312
JP11 1797
PPM 337789
SKY# 17914
UBV 8888

NGC 2867

C90
PK 278-5.1
ESO 126-PN8
GC 1843
H 3163
GC 1843

THEMES USED IN KAPPA VELORUM

KAPPA VELORUM
* KAP VEL
CPC 19 3421
GC 12938
HD 81188
HR 3734
N30 2228
ROT 1470
SKY# 18088
UBV M 15354
UVBY98 100081188

IC 2488

CLUSTER OF STARS
OCL 789
ESO 166-SC14

NGC 2899

PK 277-3.1
ESO 166-PN13
H 3169
GC 1859

NGC 3033

OCL 796
ESO 167-SC6
CR 12
LUND 519
H 3194
GC 1952

NGC 2925

OCL 783
ESO 166-SC22
CR 210
LUND 511
H 3177
GC 1877

NGC 2910

OCL 781
ESO 166-SC17
CR 209
LUND 510
H 3171
GC 1868

NGC 2866

OCL 774
ESO 212-SC3
PISMIS 13
LUND 504
H 3162
GC 1842

NGC 3105

OCL 798
ESO 167-SC14
AM 0958-543
CR 214
LUND 528
H 3219
GC 2000

THEMES USED IN AVIOR

AVIOR

EPSILON CARINAE
TYC 8579-2692-1
DOUBLE OR MULTIPLE STAR
NSV 4058
* EPS CAR
CPC 20 2212
CPD-59 1032
FAUST 2427
FK5 315
GC 11463
GCRV 5546
GEN#+1.00071129
GSC 08579-02692
HD 71129
HIC 41037
HIP 41037
IRAS 08214-5920
JP11 1671
N30 1949
PPM 336856
SACS 185
SAO 235932
SKY# 15897
TD1 12403
UBV 8042
UBV M 14307

NGC 2516

RUNNING MAN CLUSTER
C96
OCL 776
ESO 124-SC6
CR 172
MEL 82
LUND 411
H 3111
GC 1619
LAC II 3